

# Lookbook

# Fall/Winter

# 2020

## Autumn in New York

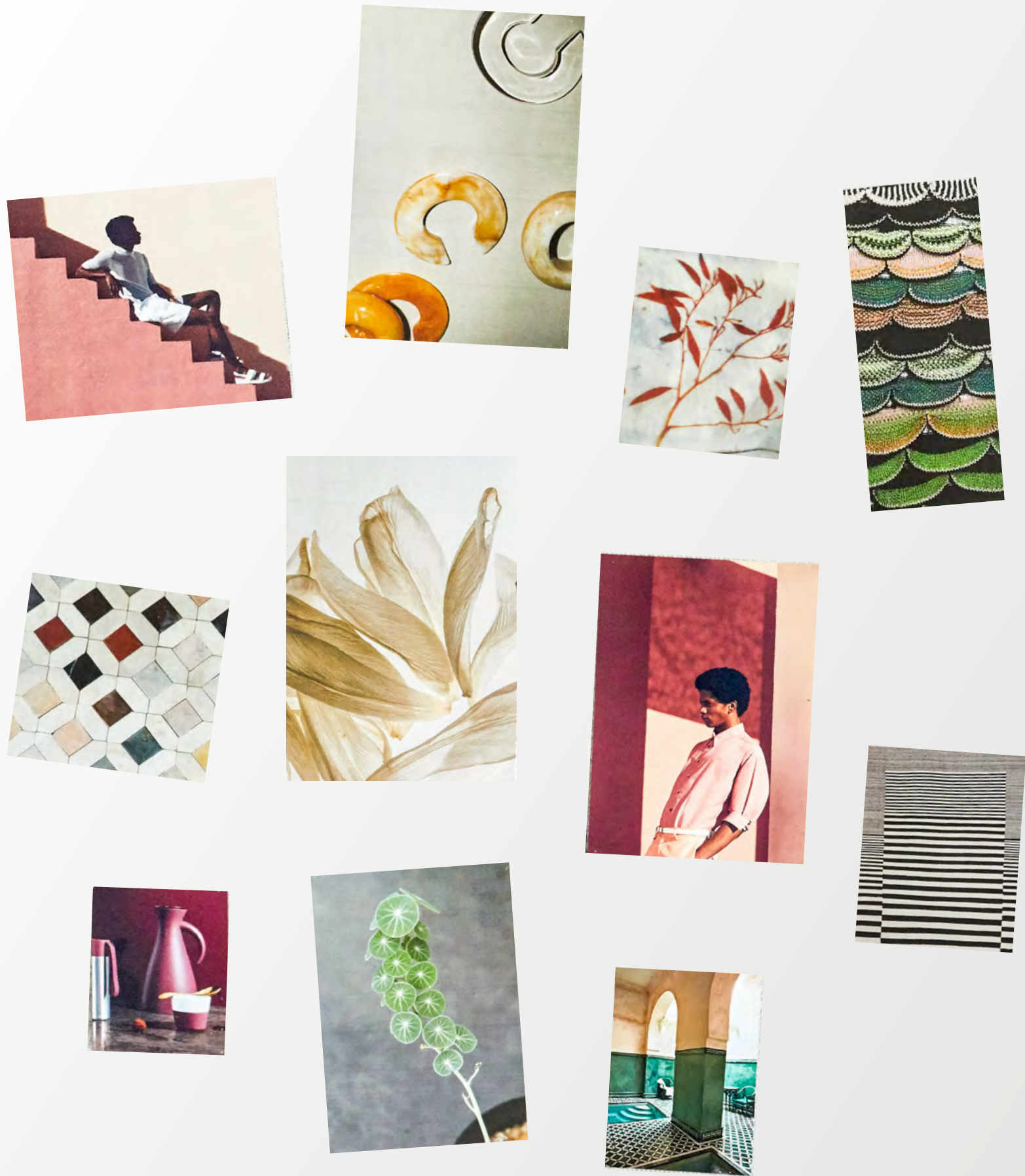
The Fall/Winter 2020 Chilewich collection explores the interaction of texture, pattern, and color. These original designs for tabletops and floors reveal how even the most subtle shifts in structure, scale, and tone can transform the look and feel of a textile.

The collection, which is made in the United States, comes to life just a few miles from where it was designed. Nestled in Brooklyn's historic Cobble Hill neighborhood, the Greek Revival townhome of Athena and Victor Calderone is an inspiring backdrop for textiles that are both beautiful and functional, indoors and out.



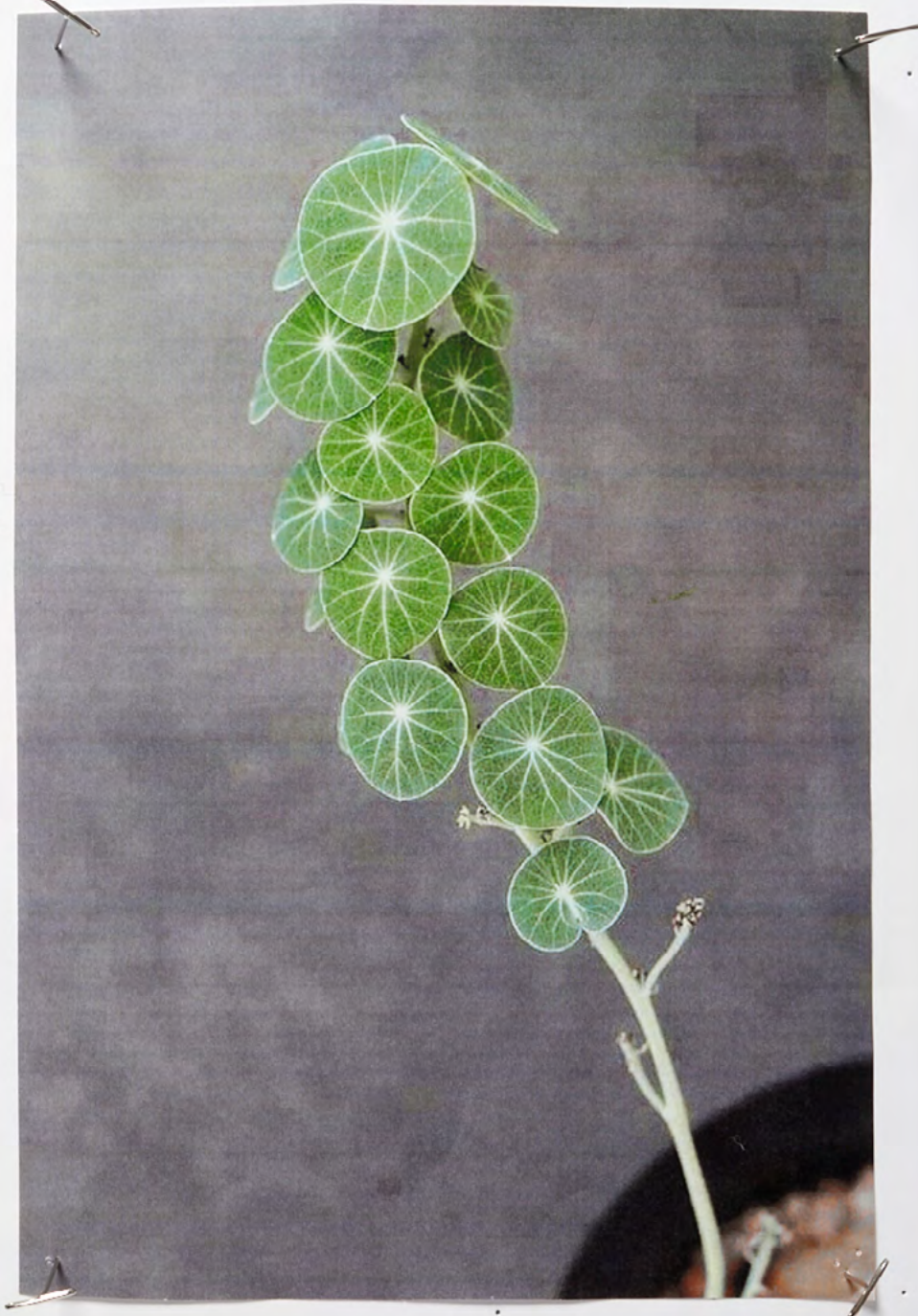
PEBBLE, Heathered





Inspiration comes in color.





## Rethinking Green

Abundant in nature, the color green can be tricky to live with. Creative director Sandy Chilewich and the Chilewich design team began work on the Fall/Winter collection by taking a fresh look at the cool hue. Drawing upon organic inspirations—hardy succulents, sunlit pines, richly patterned malachite—they developed greens that are both vibrant and versatile.





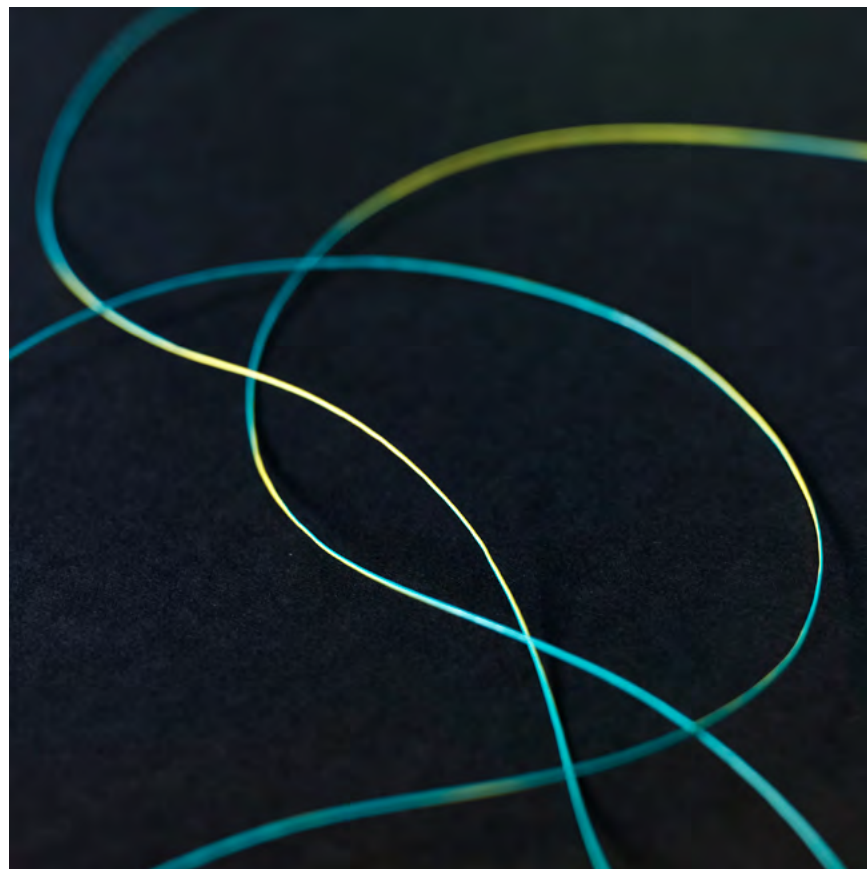
PINE, Basketweave





“Our colors have dimension.  
They're never one note.”

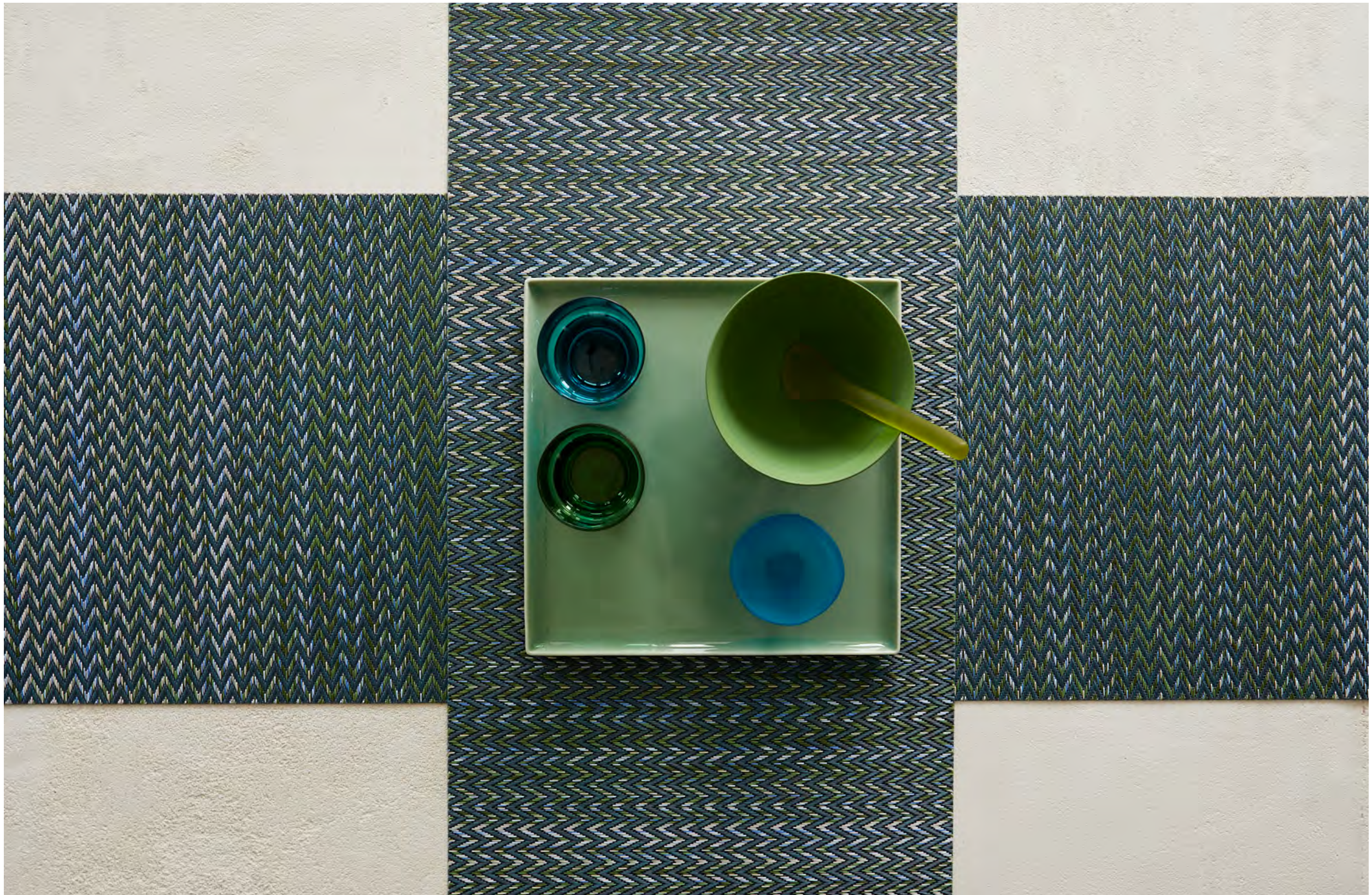
Sandy Chilewich



Everything we weave begins with TerraStrand, the name of our proprietary extruded yarns. We develop the colors of each yarn for every weave we design, and we have the unique ability to extrude two colors within a single strand of yarn. These extraordinary “bi-color” yarns are used strategically when designing a weave, so that colors seem to appear and disappear, providing subtle shading, depth, and dimension.





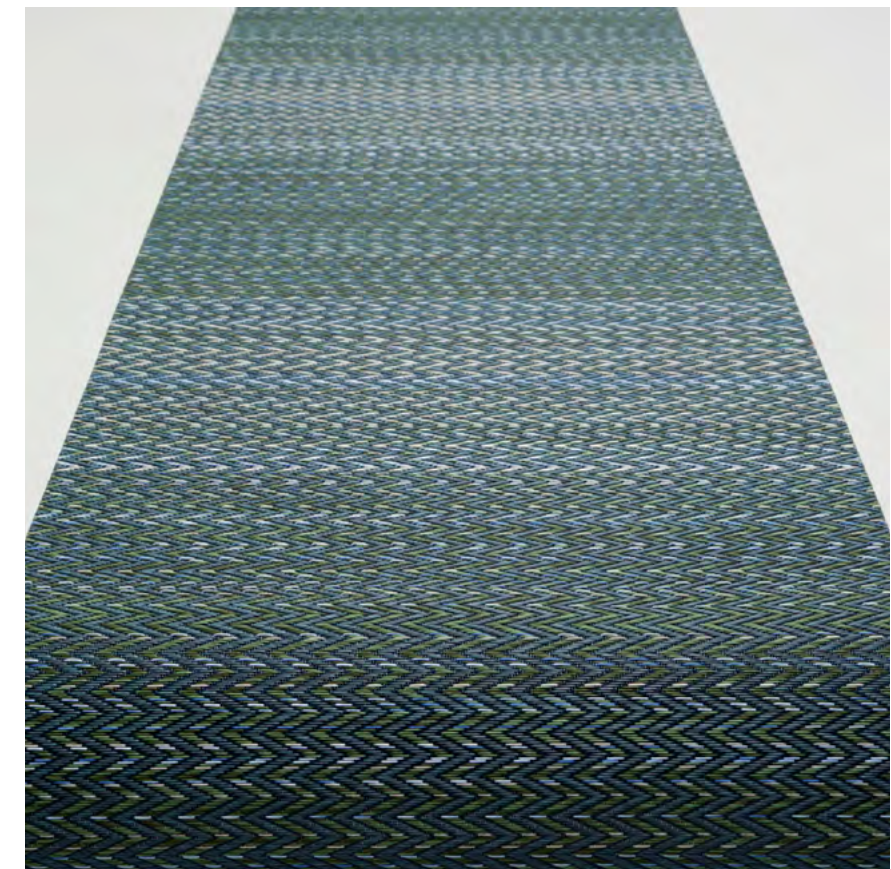


FOREST, Quill





FOREST, Quill



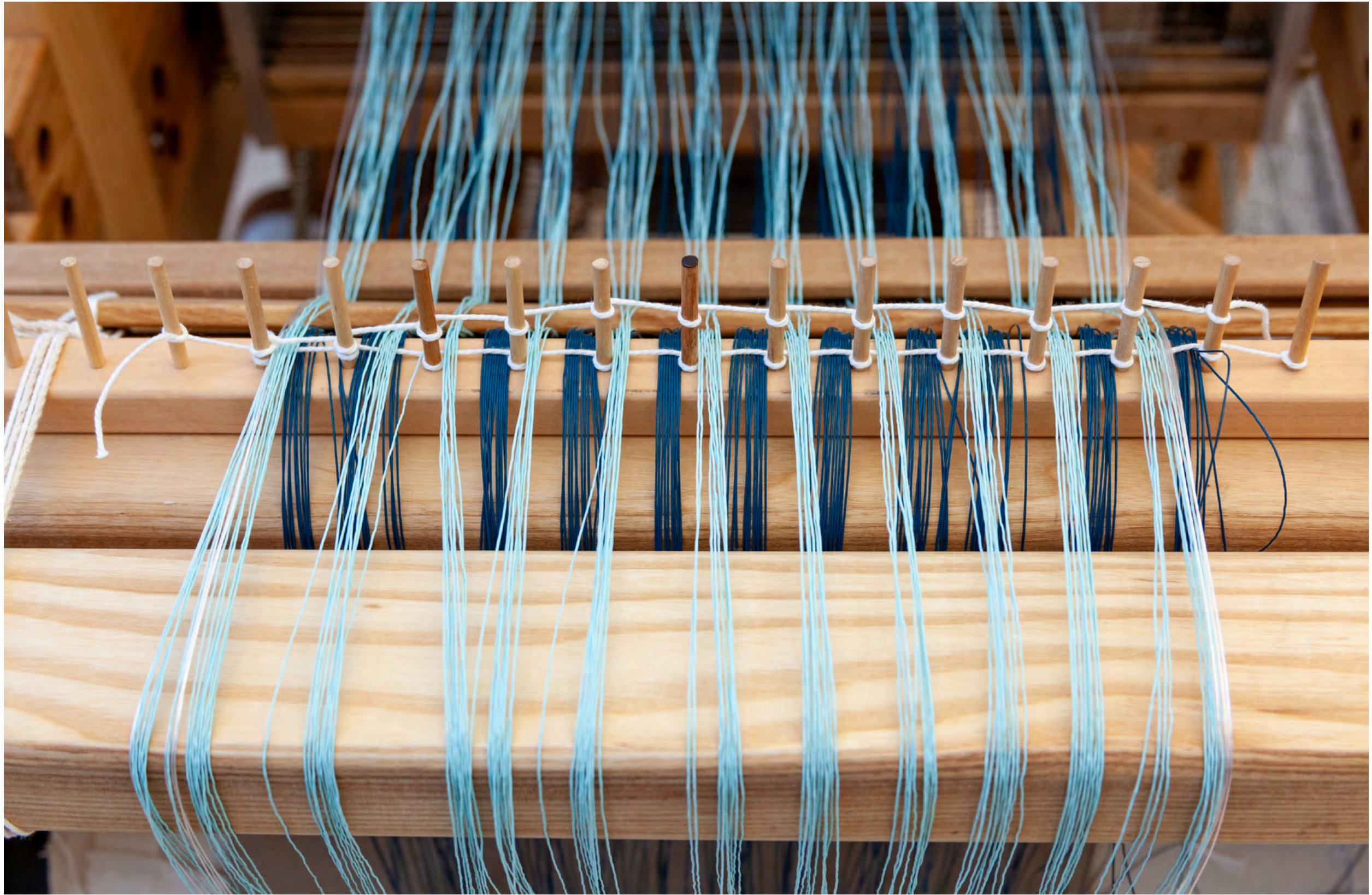




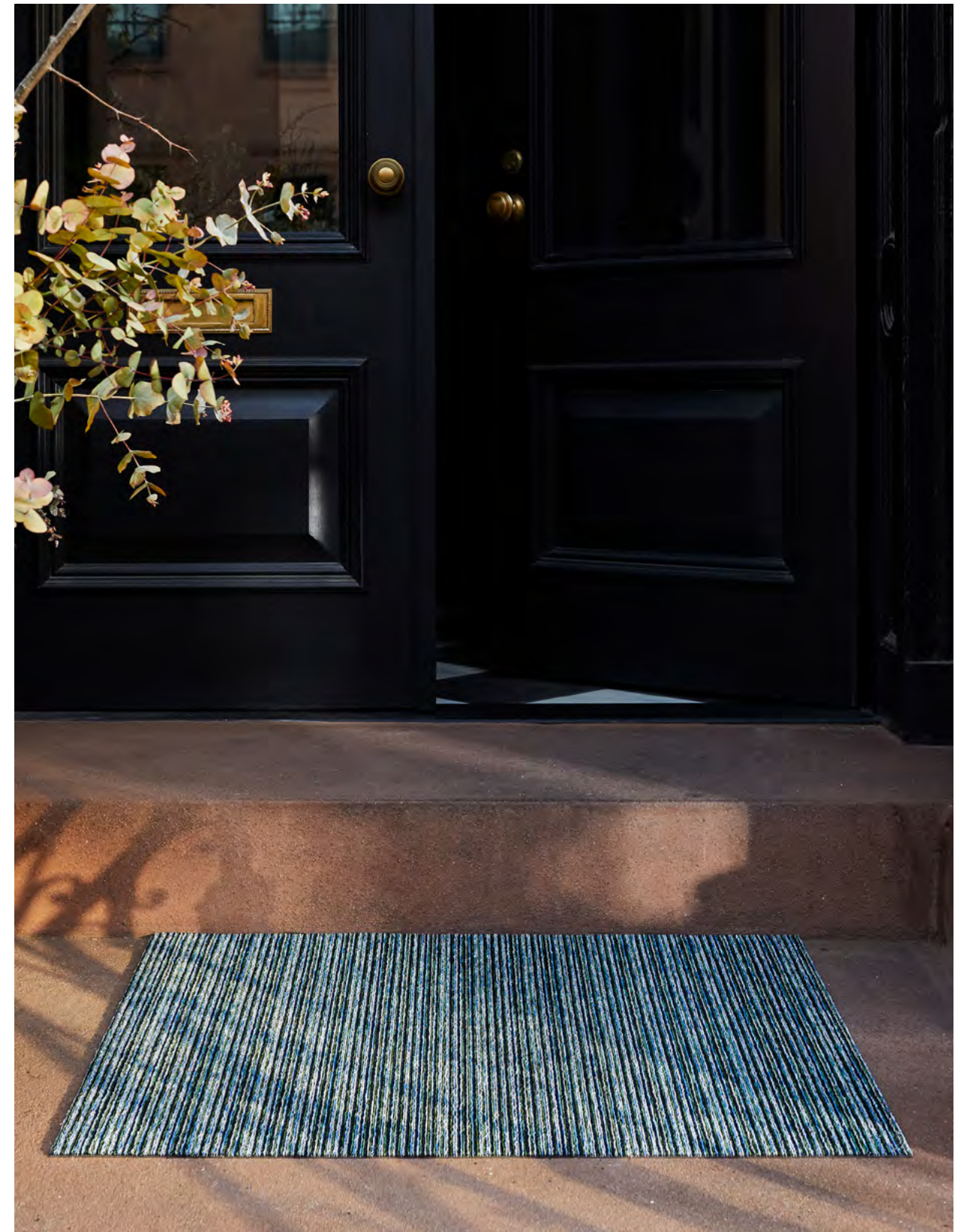
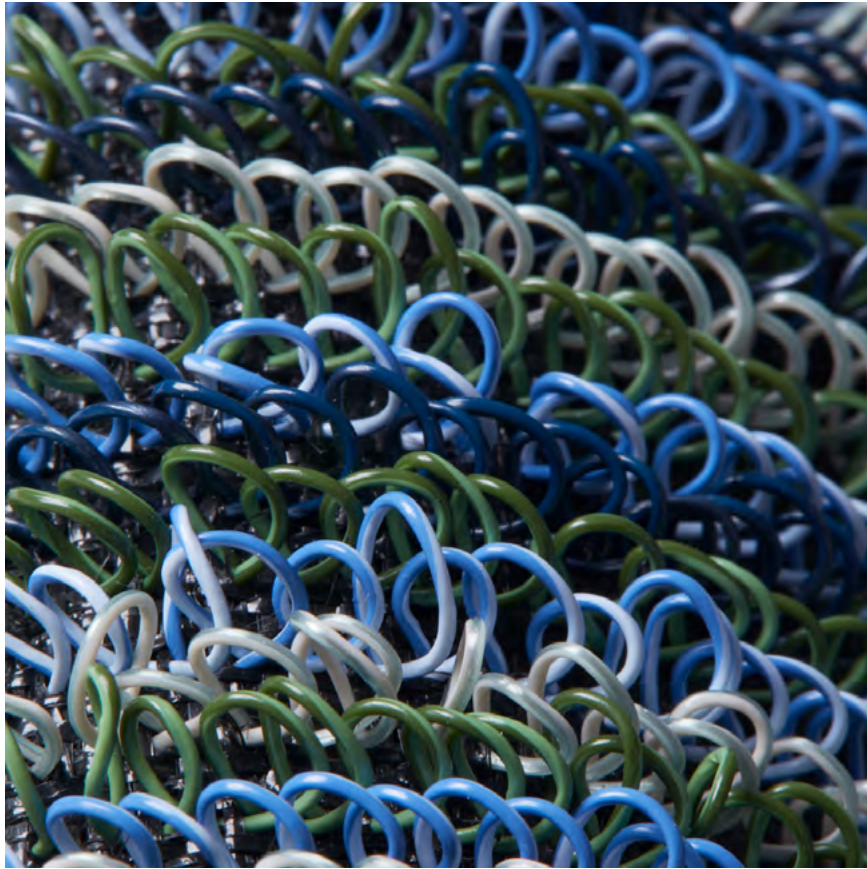
## Out of the Blue

An exploration of deep yet lively greens was the entry point to blue. Aquatic hues sampled from sea plants, Adriatic waters, and Caribbean pools informed the creation of shade-shifting combinations of cool colors that are refined and grounded by black. As cobalt and indigo come together in tufted textures, blue reaches its peak in ultramarine yarns that shimmer into violet.









FOREST, Skinny Stripe





BLUEBERRY, Breton Stripe

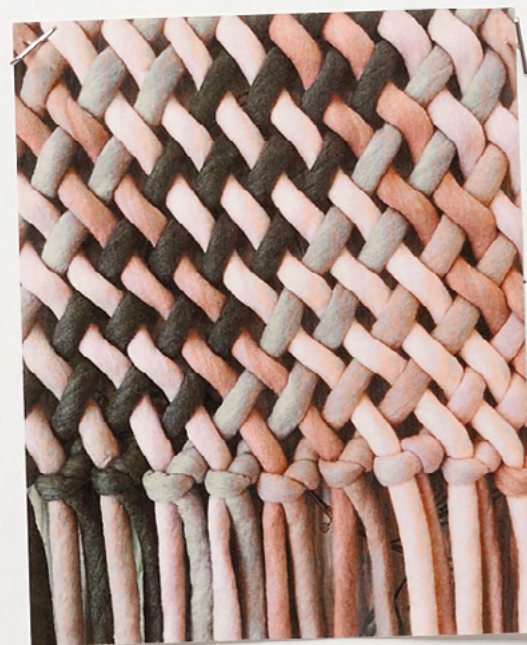
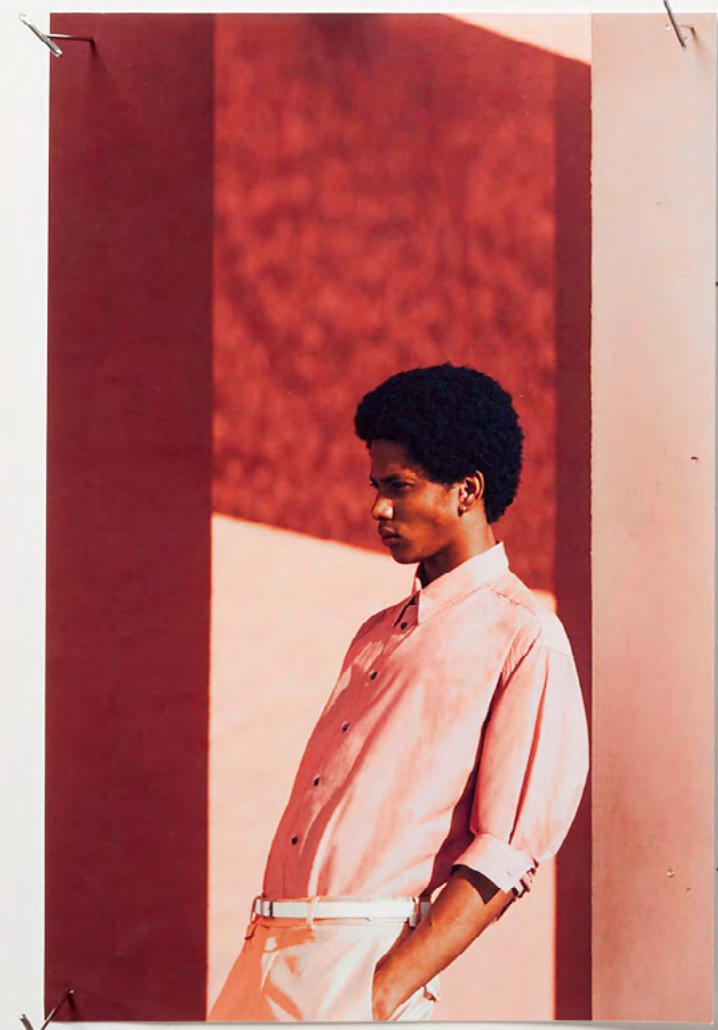






TWILIGHT, Signal

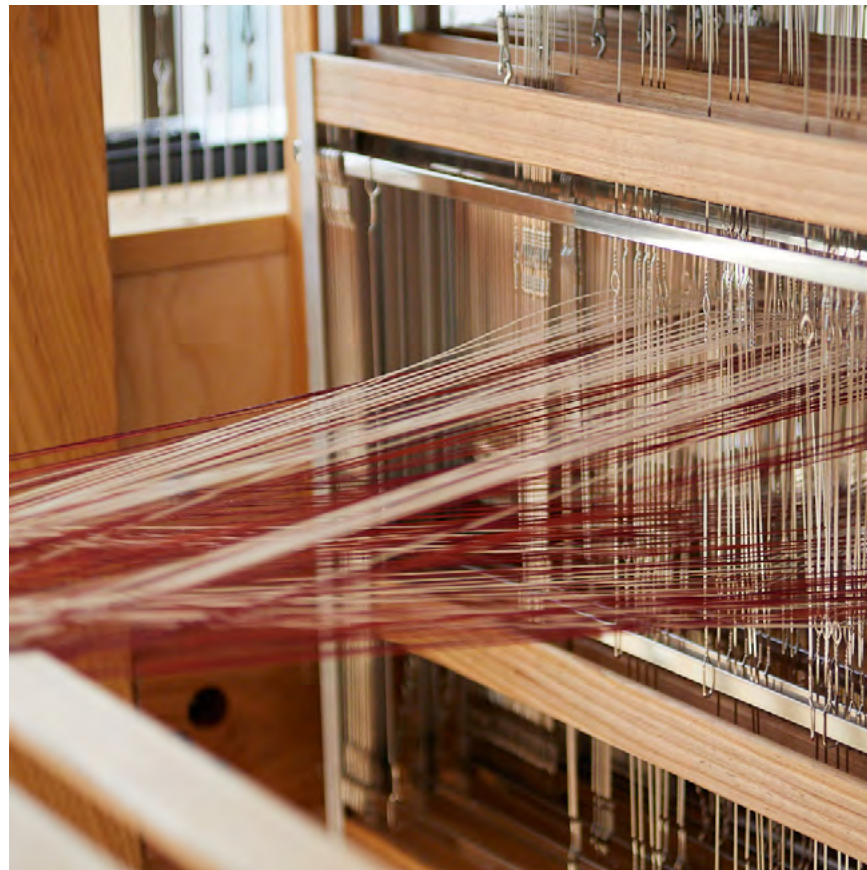




## Reimagining Red

To harness the power and allure of red for the fall and winter months, the design team looked to brick and berry, garnet and plum. Tonal combinations of these full-bodied hues reveal their dynamic range. Spanning warm and cool, they unite texture and pattern to dazzling effect. The resulting textiles are statement pieces—the collection's woven and tufted odes to pink.





MULBERRY, Quill





MULBERRY, Quill







MULBERRY, Skinny Stripe



MULBERRY, Skinny Stripe





## Mastering Monochrome

The foundation of black and white continues to propel our design process forward, season after season. As eternal absolutes—light and dark, beginning and end, blank canvas and total darkness—these poles offer endless creative possibilities. For Fall/Winter, black and white bring texture to the fore with the reintroduction of our Bouclé weave and come together in the ultimate high-contrast pattern: sailor stripes.





NOIR, Bouclé



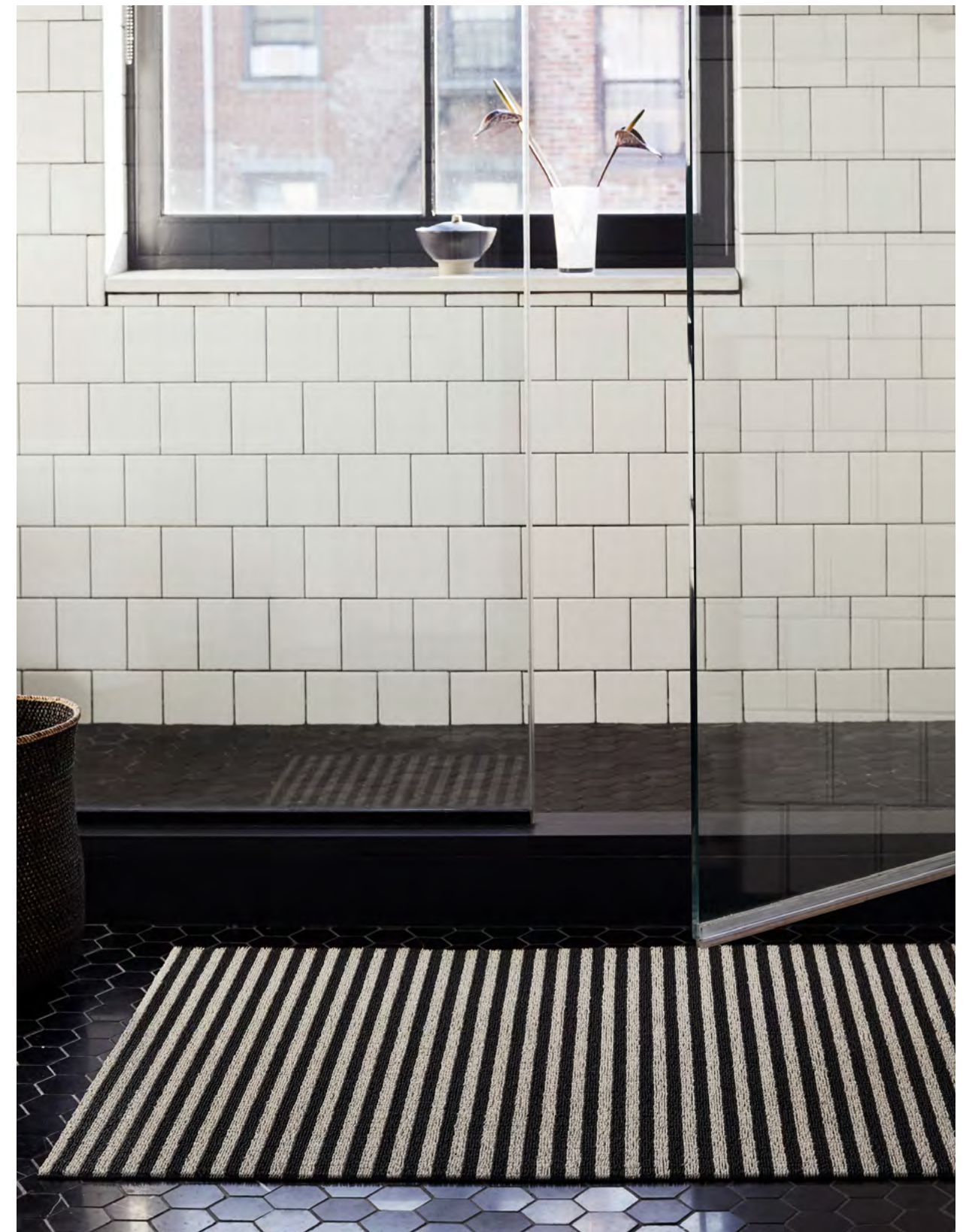
NATURAL, Bouclé





NOIR, Bouclé





GRAVEL, Breton Stripe





## New Neutrals

Able to harmonize with virtually any space or style while also enhancing it, neutrals are a Chilewich specialty. The Fall/Winter collection expands this area of focus with serene new hues that illuminate the art of weaving through subtle contrasts. Variations on cream, sand, and ice are joined by burnished metallics, culminating in the warm glow of luminous, honeyed golds that were more than two years in the making.





SAND, Quill





DRIFTWOOD, Whistle



UMBER, Thatch



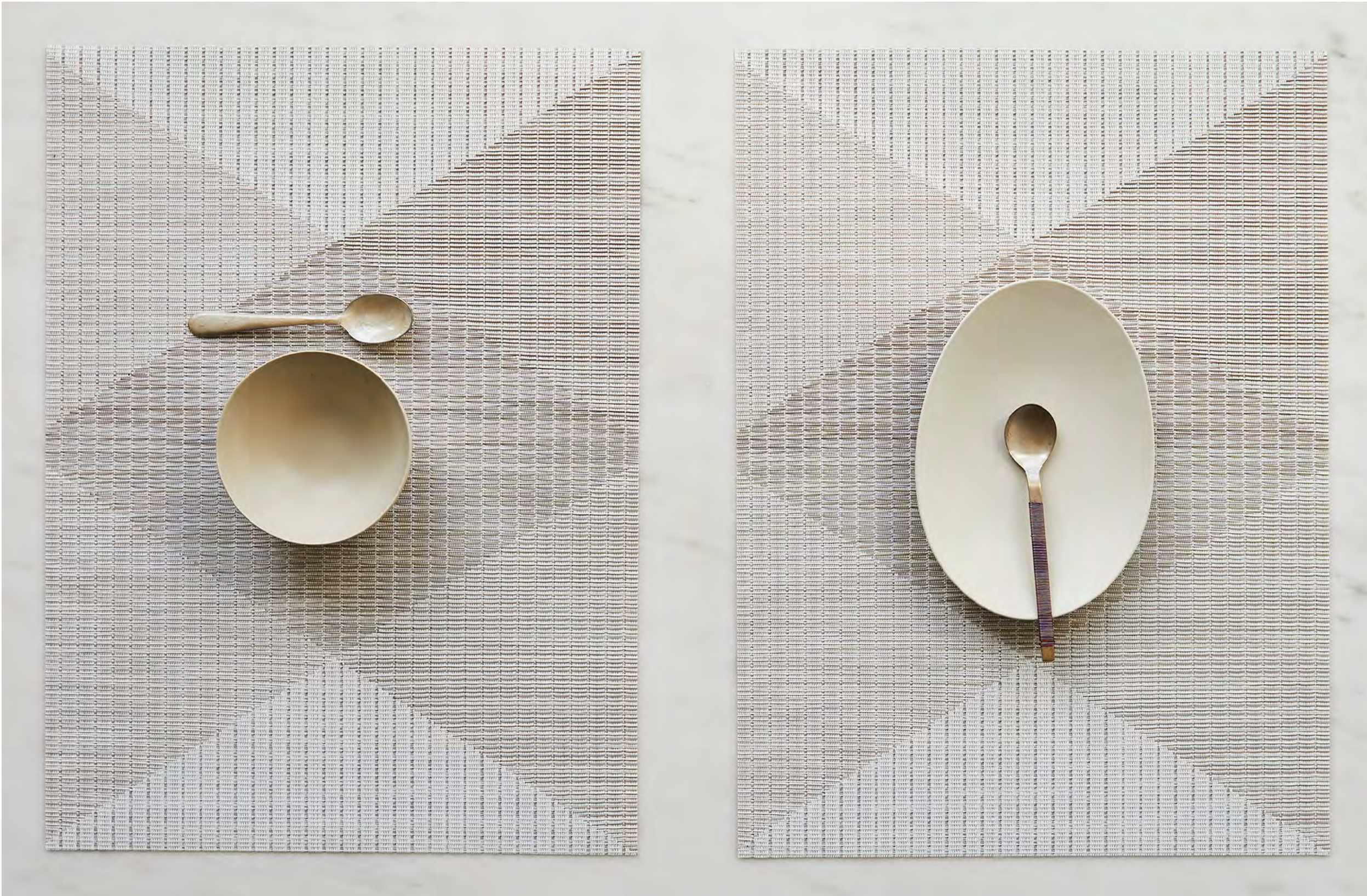


SAND, Quill



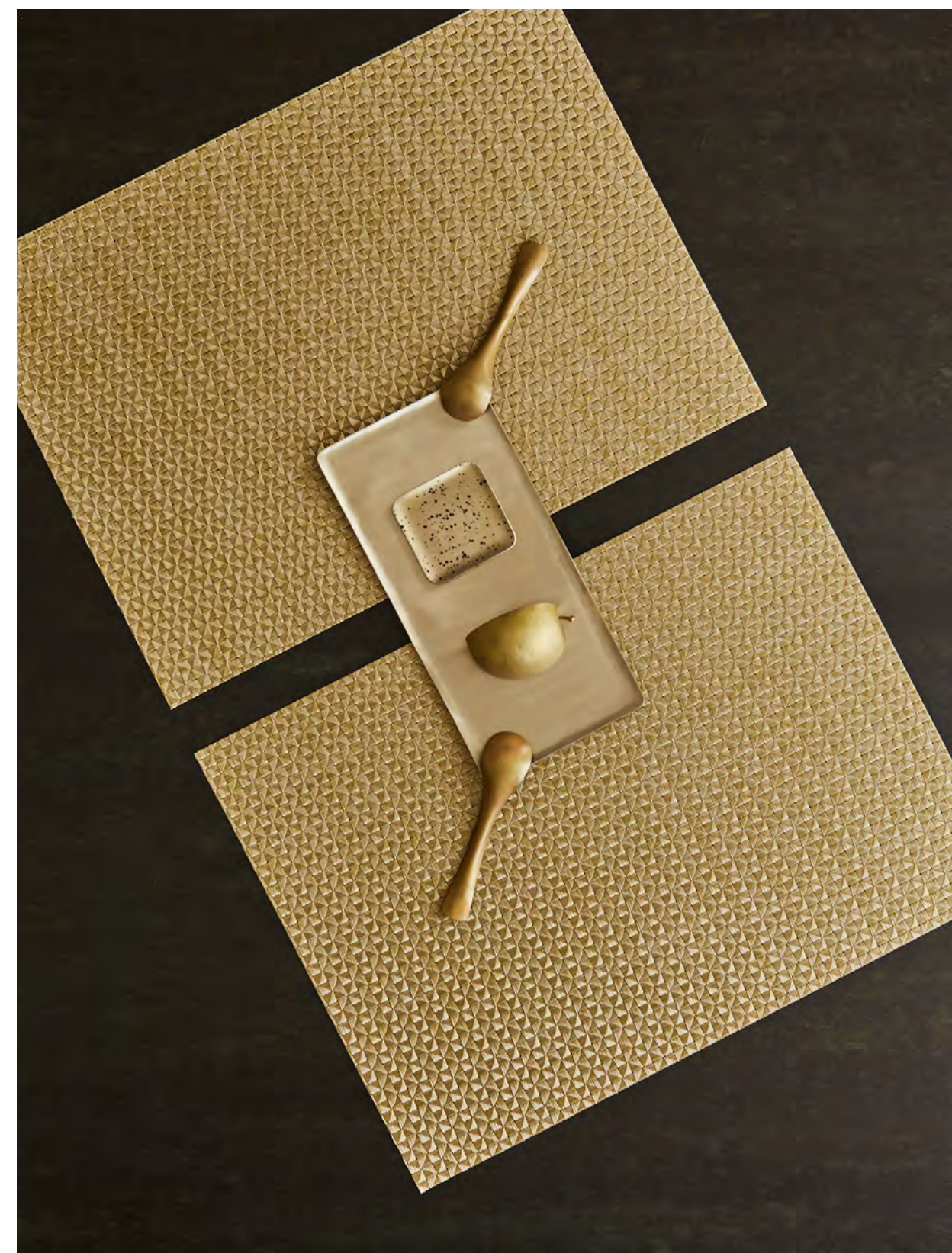
SAND, Quill





SAND, Signal





HONEY, Origami





GILDED, Basketweave



# On Location

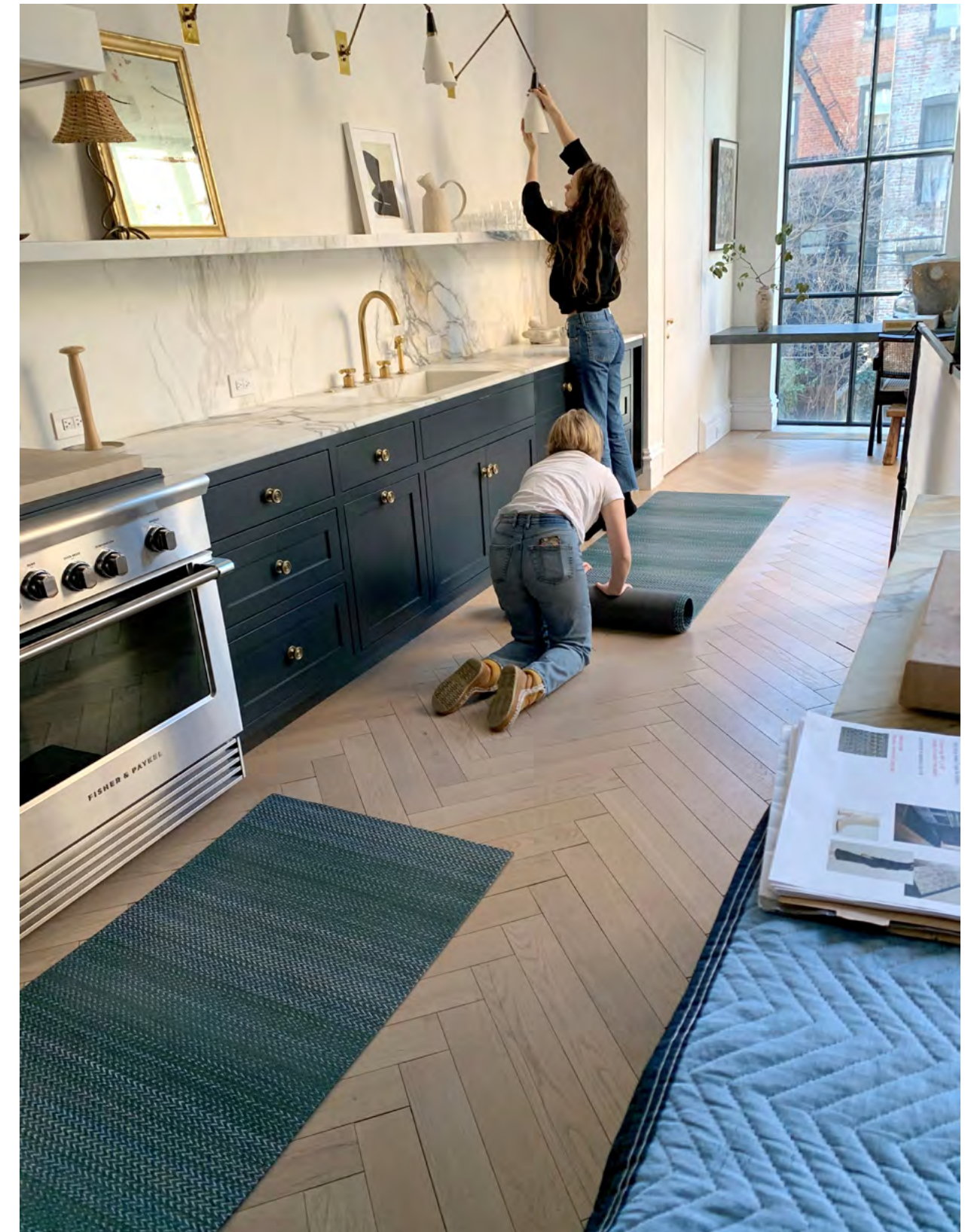
## Cobble Hill, Brooklyn

Described by *The New York Times* as “achingly pretty,” the Brooklyn neighborhood of Cobble Hill is filled with 19th-century rowhouses. The site of our shoot is an especially handsome example, located on a historic, tree-lined street. Renovated and reimagined by Athena Calderone in collaboration with Elizabeth Roberts Architecture, the townhouse is a true original. “It is my masterpiece,” says Calderone, “second only to being my family’s sanctuary.”





## Behind the scenes



INSTALLING FLOOR MATS











Photo Team



Creative Director  
**Sandy Chilewich**

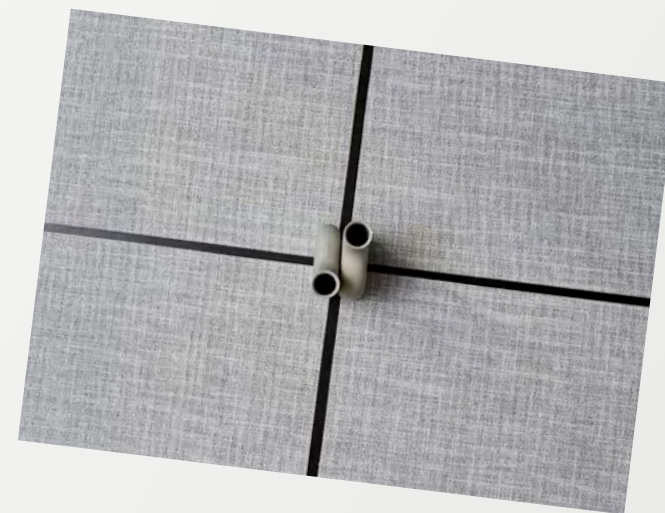
Location Photographer  
**Pippa Drummond**

Location Stylist  
**Rebecca Bartoshesky**

Studio Photographer  
**Megan Senior**

Producer  
**Marcie Parmet**





## Chilewich brings depth to surfaces.

Design-led and family-owned, Chilewich pushes the boundaries of form and function with products that combine innovative textiles and distinctive colors with extraordinary durability and easy maintenance. Chilewich designs can be found in the permanent collection of the Cooper Hewitt, Smithsonian Design Museum, and in homes, workplaces, restaurants, and hotels around the world. Discover the full collection at [chilewich.com](https://chilewich.com)



Chilewich | Sultan LLC  
39 West 19th Street  
New York, NY 10011

Chilewich® and TerraStrand® are registered trademarks.  
All rights reserved.